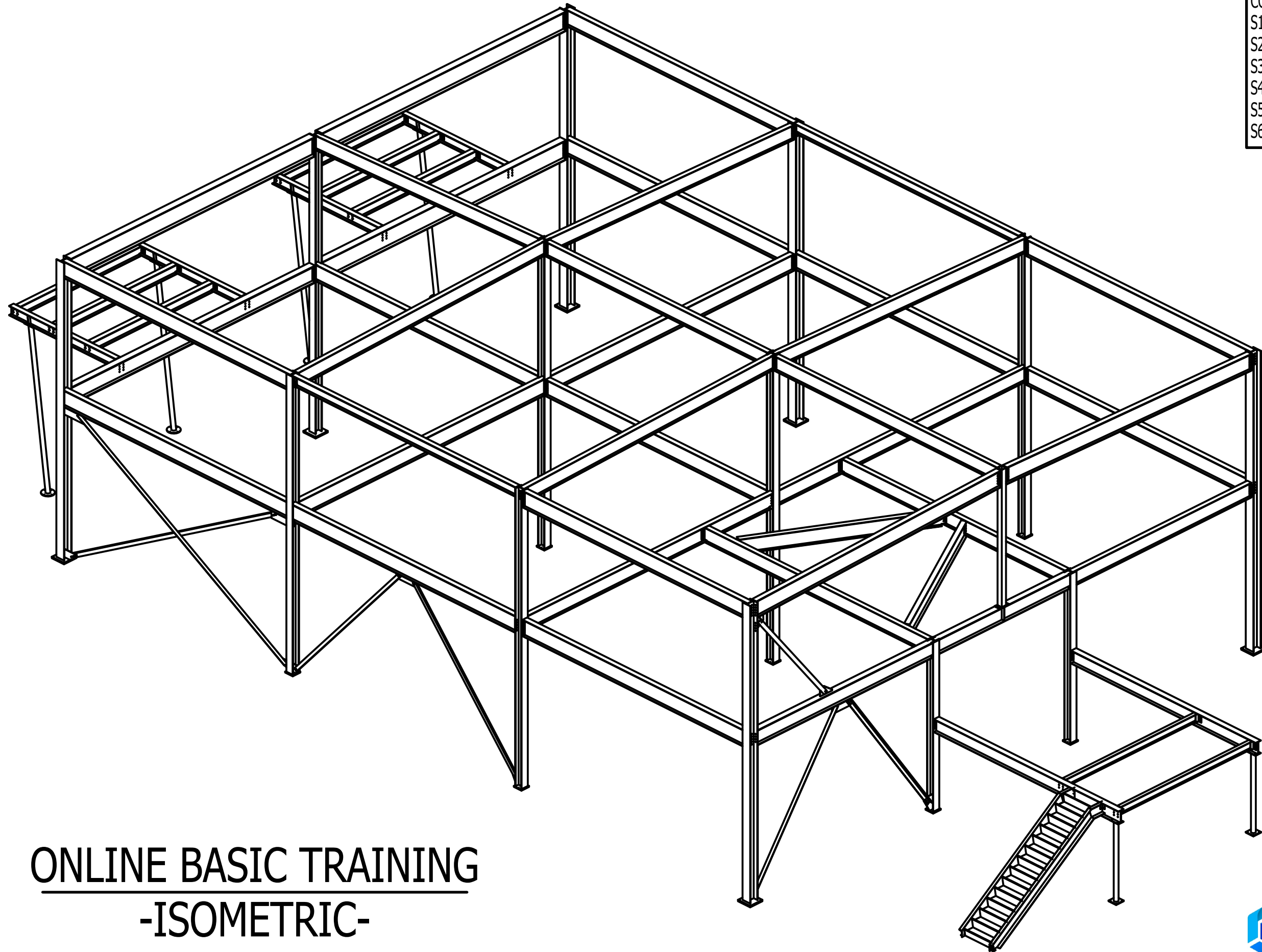
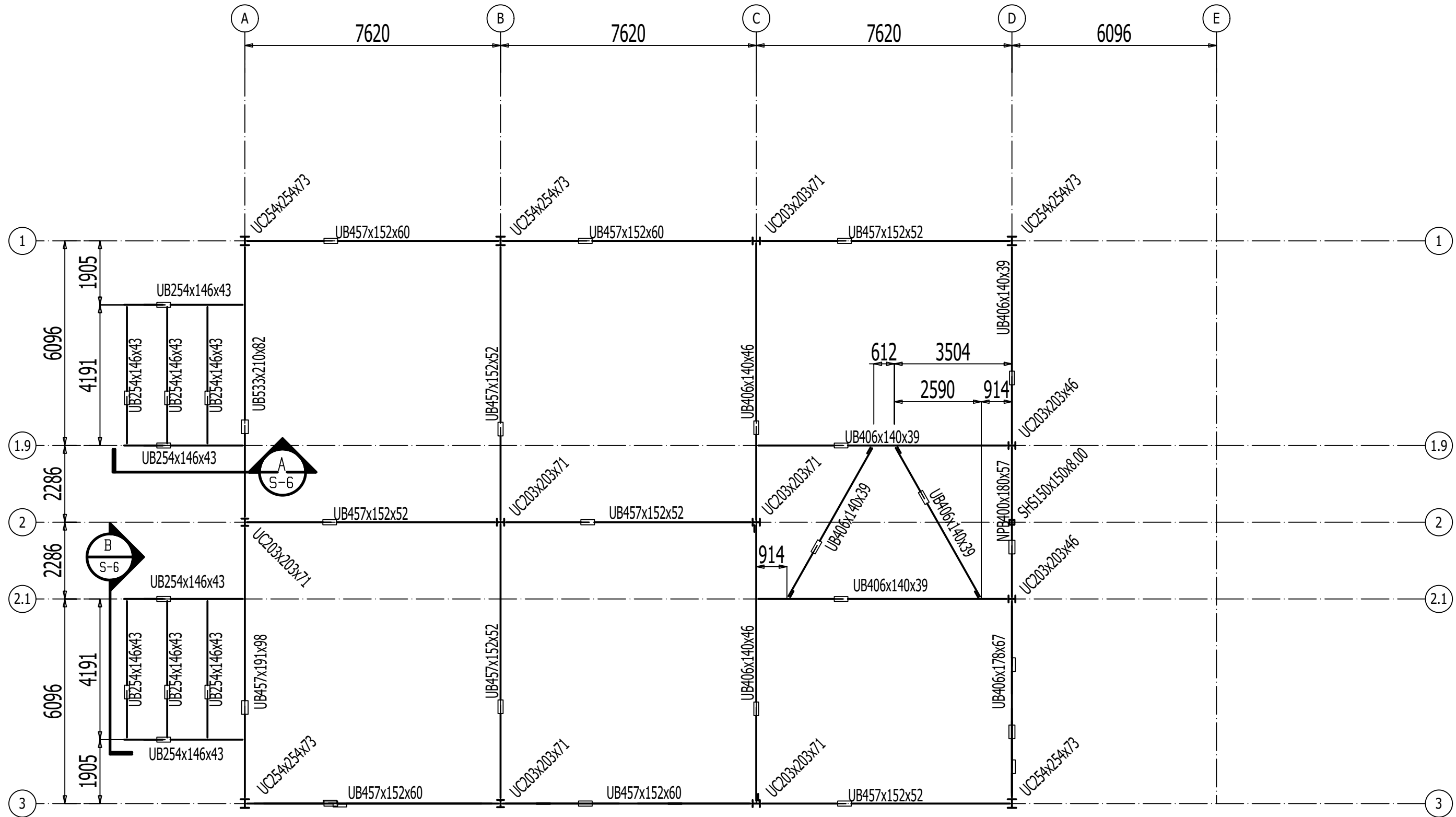


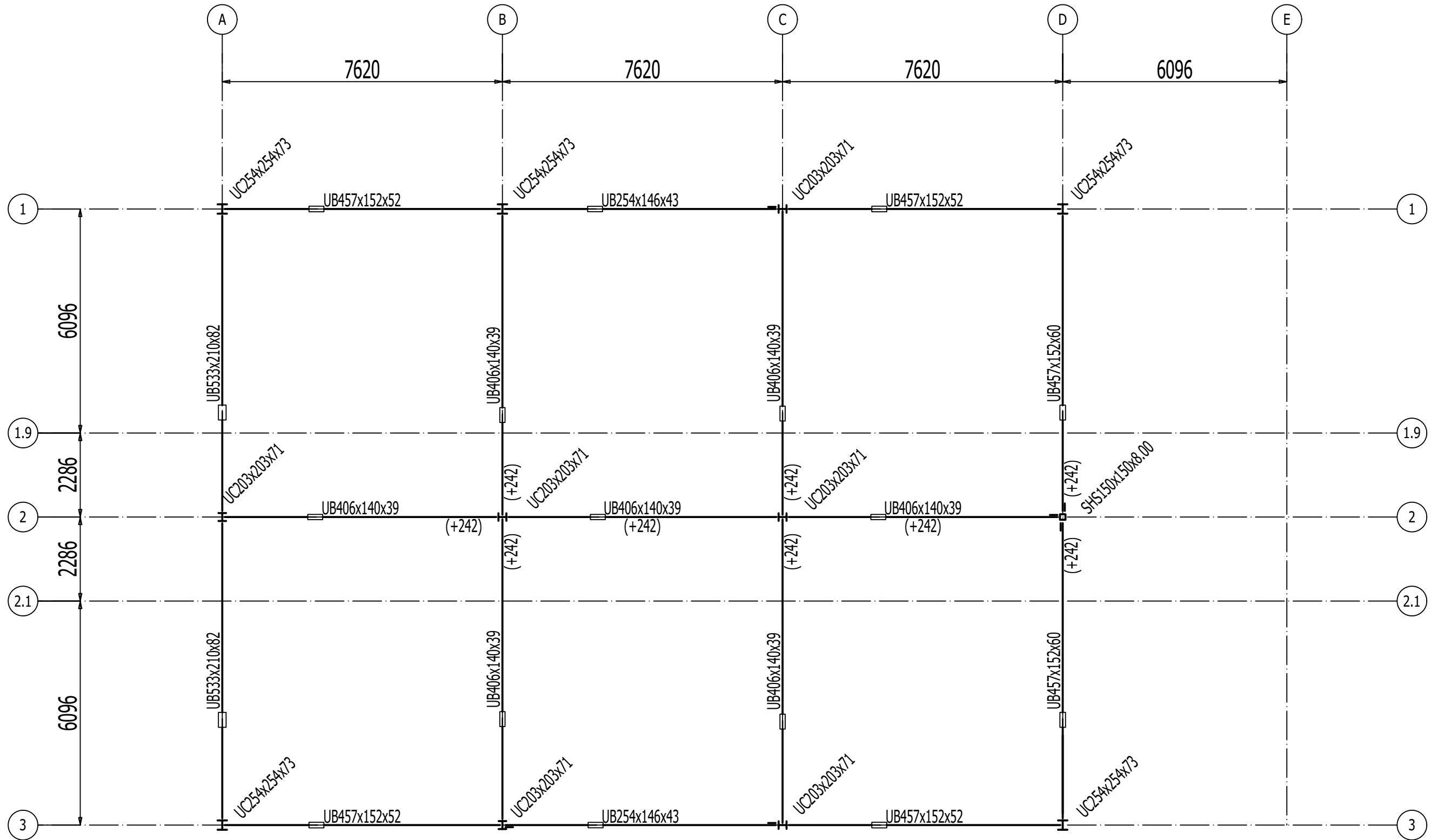
COVER  
S1 - SECOND FLOOR FRAMING PLAN  
S2 - ROOF FRAMMING PLAN  
S3 - ELEVATION LINE 3, AND BRACE LINE D  
S4 - MEZZANINE AND STAIR DETAIL  
S5 - COLUMN SCHEDULE  
S6 - CANOPY SECTIONS



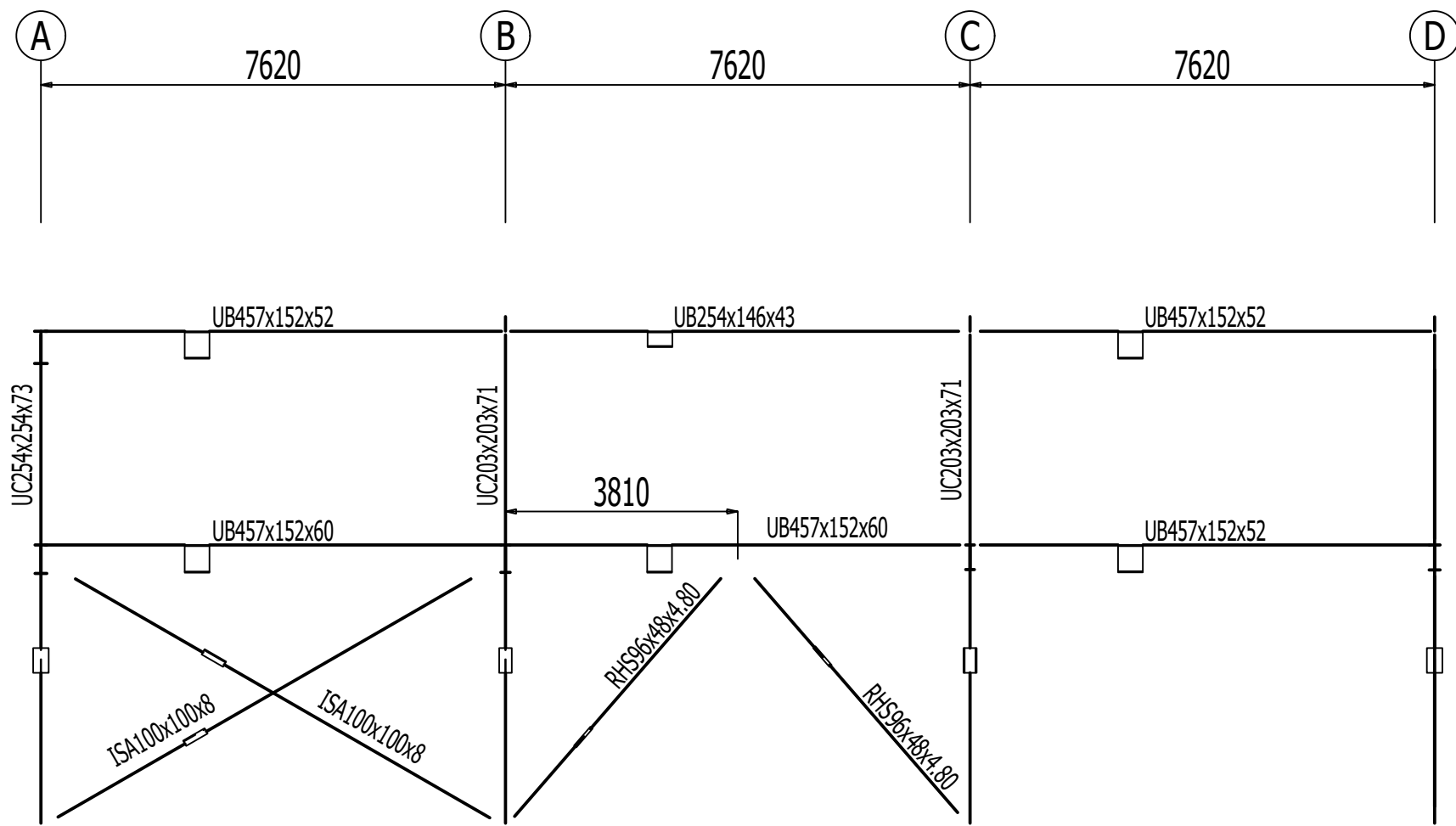
ONLINE BASIC TRAINING  
-ISOMETRIC-



**SECOND FLOOR FRAMING PLAN**  
Elevation: 4624 (U.N.)



**ROOF FRAMING PLAN**  
Elevation: 8129 (U.N.)

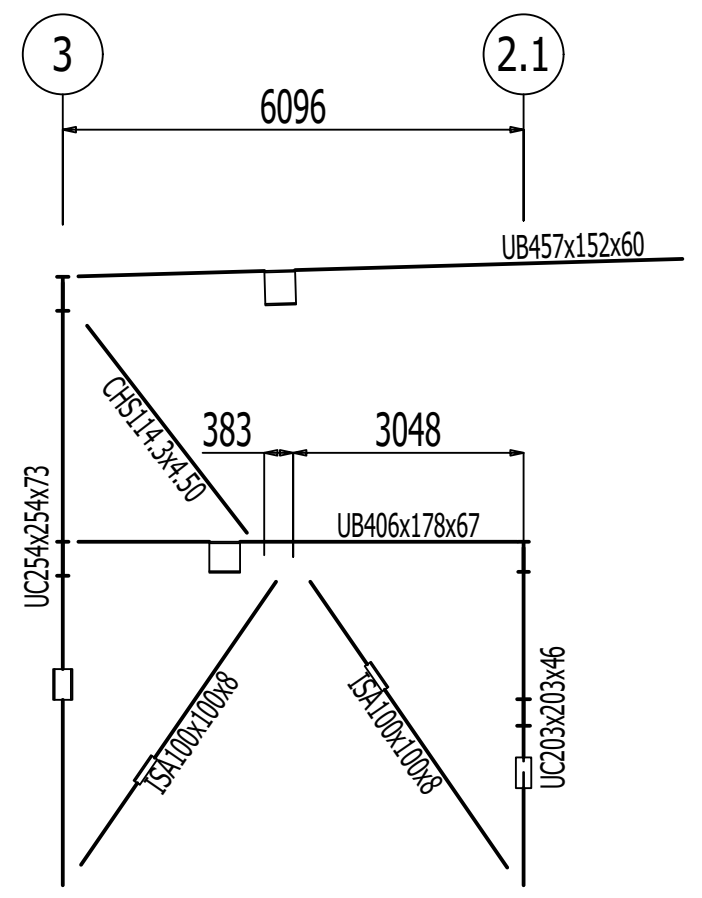


**ELEVATION GRID 3**

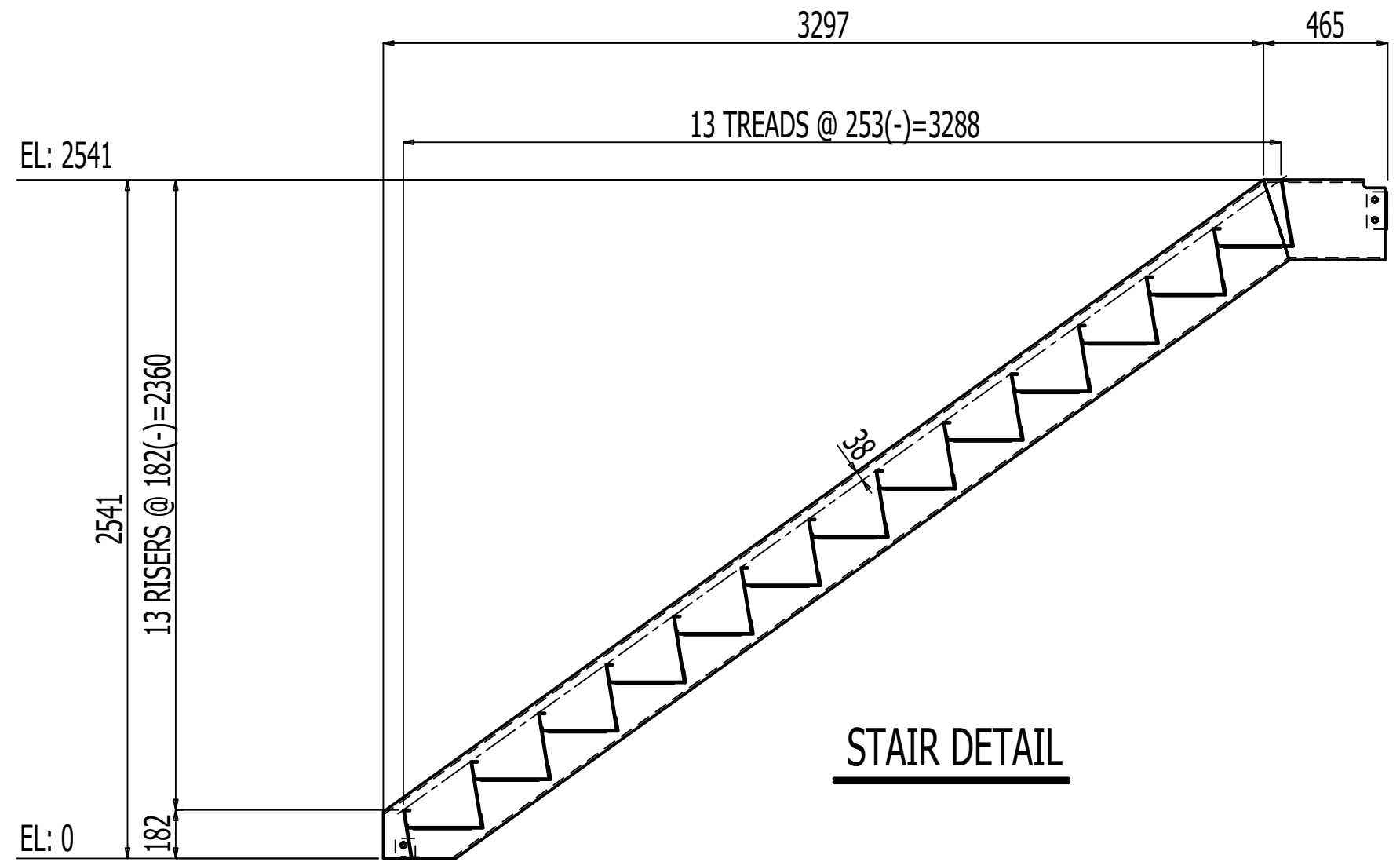
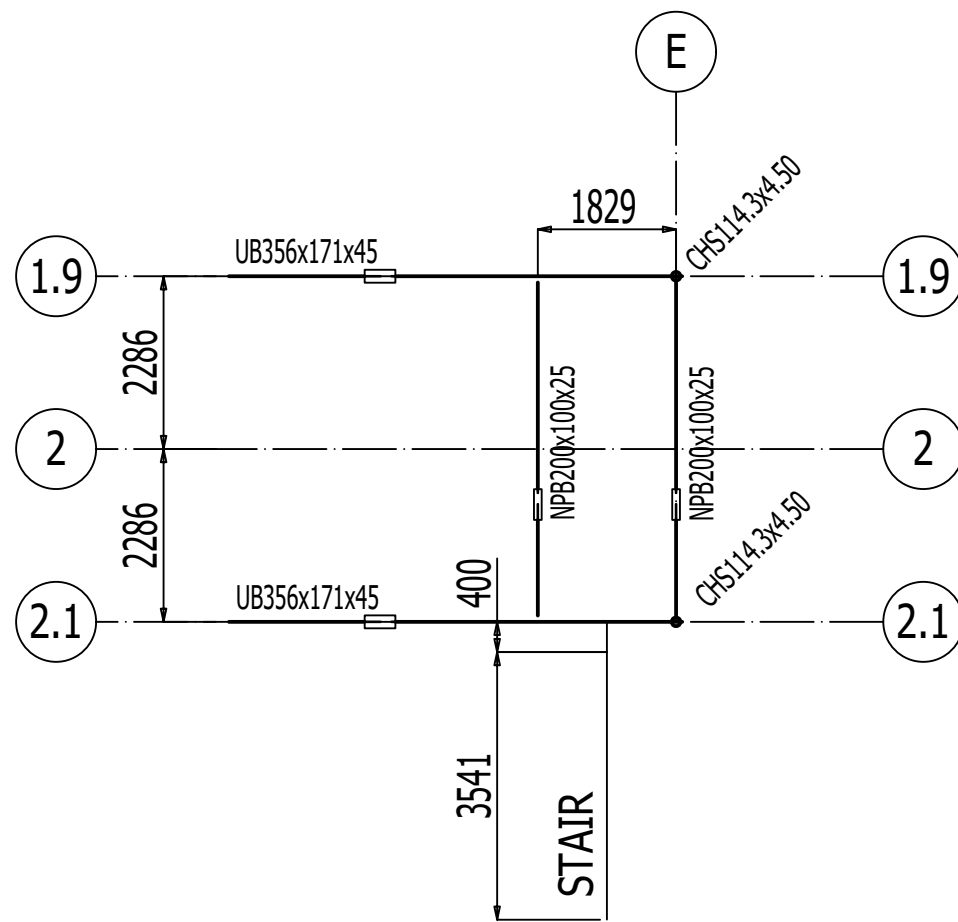
**ROOF**  
Elevation: 8129

**SECOND FLOOR**  
Elevation: 4624

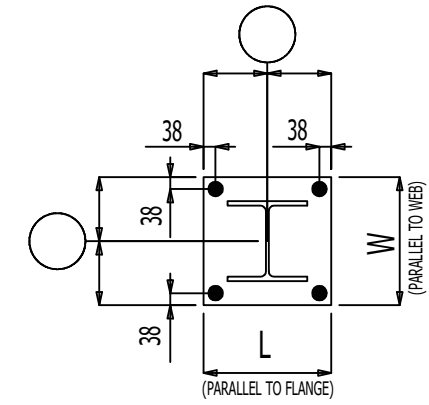
**ANCHOR PLAN**  
Elevation: 0



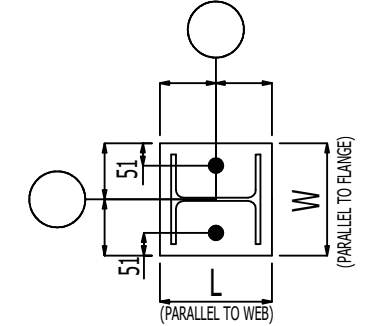
**BRACE LINE D**



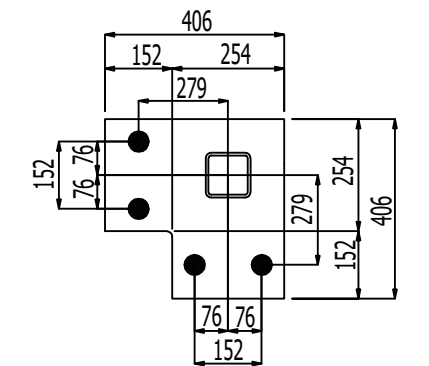
	A1, A3 B1, D1, D3	A2 B2,B3 C1,C2,C3	D1.9, D2.1	E1.9, E2.1	D2	SLOPING COLUMNS
ROOF ELEV. VARIES						
SECOND FLOOR ELEV. 4624					SHS150x150x8	
MEZZANINE ELEV. 2541	UC254 x 254 x 73	UC203X203X71	CHS 114.3X4.50			CHS 114.3 x 4.50
BOTTOM OF BASE PL ELEV. = 0				CHS114.3x4.50		
BASE PL (WxLxT)	407 x 407 x 39	254 x 254 x x26	254 X 254 X 26	254 X 254 X 20	AS REQUIRED	TYPE D
BASE PL TYPE	A	B	B	A	—	D
CAP PLATE	—	—	—	AS REQUIRED	AS REQUIRED	AS REQUIRED
REMARKS						



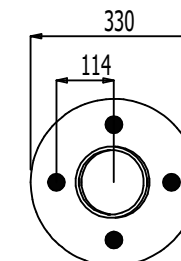
A TYP. BASE PLATE  
(24mm DIA ANCHOR BOLT)



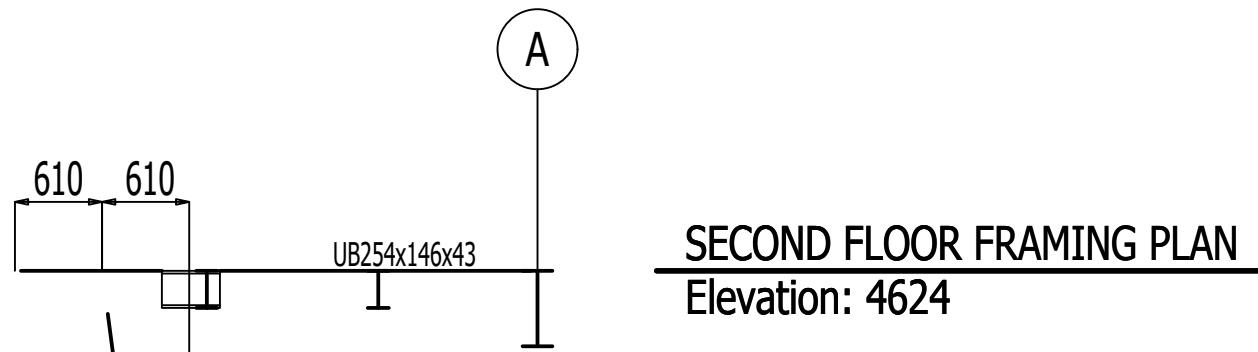
B TYP. BASE PLATE  
(20mm DIA ANCHOR BOLT)



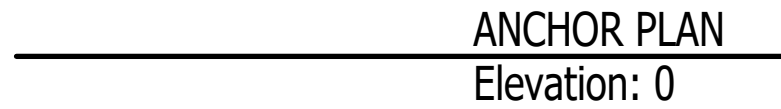
C B.P. AT GRIDLINE (E,1)  
(24mm DIA ANCHOR BOLT)  
32mm THICK PLATE



D B.P. AT SLOPING COLUMNS  
(20mm DIA ANCHOR BOLT)  
20mm THICK PLATE

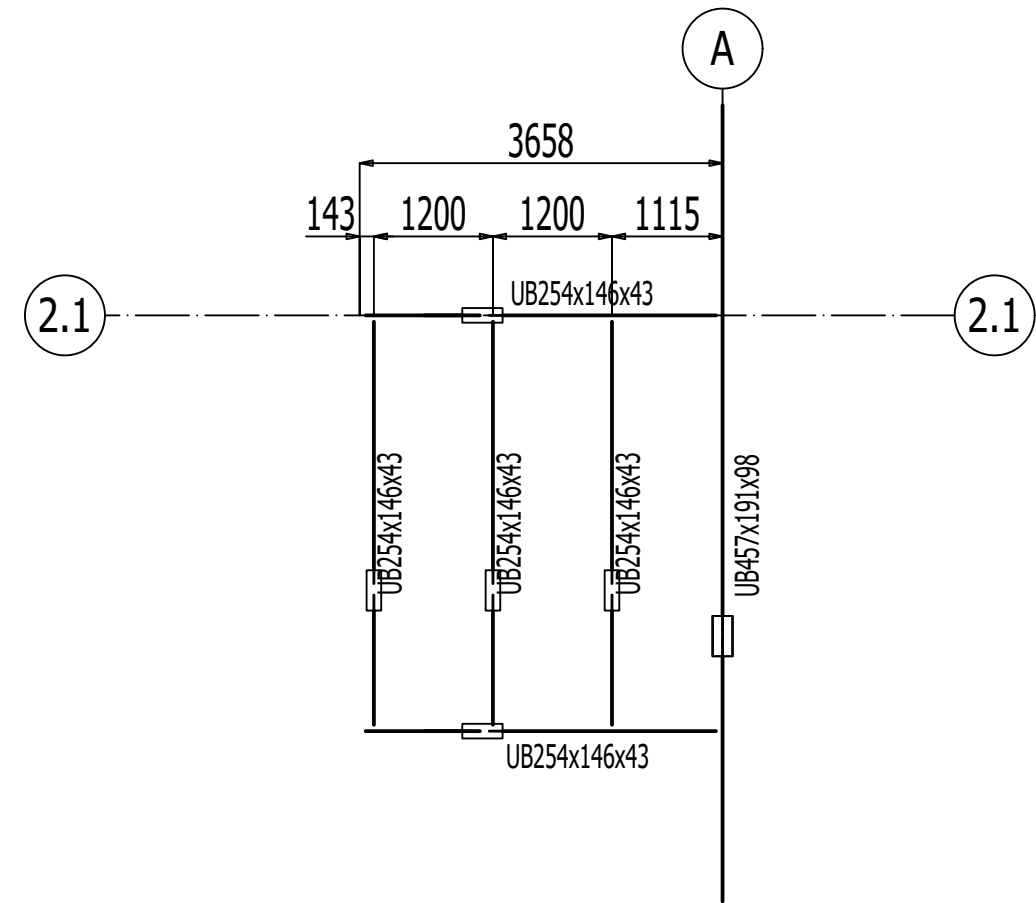


CHS114.3x4.50



CANOPY SECTION

A



CANOPY PLAN

Elevation: 4624 (U.N.)

B