

SIDEPLATE FOR SDS/2 INSTALLATION

MiTek
SIDEPLATE[®]
Optimized. Minimized. Simplified.

 **SDS/2**
A NEMETSCHek COMPANY

The SidePlate for SDS/2 installer will place the **SidePlate Component**, **SidePlate Markup Tool** and **SidePlate Import** into your SDS/2 v2017 or v2018 plugins folder. It will also install the **Detailing Templates** into your SDS/2 v2017 or v2018 templates folder. Before starting the SDS/2 SidePlate Plugin installation, please ensure that SDS/2 v2017.19 or v2018.17 and newer is already installed. If SDS/2 v2017.19 or v2018.17 and newer has not been installed, please visit <https://www.sds2.com/support/releases> to download the appropriate SDS/2 release. SDS/2 installation instructions will be displayed during the installation process.

To install the SidePlate for SDS/2 Plugins and Templates, you will need to be logged in as Administrator, or under an account with Administrator rights. Once logged in to the correct account, download the SidePlate for SDS/2 installer from <https://www.sideplate.com/resources/software/>. After the download is complete, double-click on the executable. **NOTE: All users that have a SidePlate project will need to run the installer.**

NOTE: WINDOWS MAY ASK IF YOU WOULD LIKE TO ALLOW THE PROGRAM TO MAKE CHANGES TO YOUR SYSTEM, YOU WILL NEED TO ANSWER YES IN ORDER FOR THE INSTALLATION TO CONTINUE.

INSTALLATION

The installation will start with a welcome screen, as shown in Figure 1, stating that a wizard will guide you through the installation; just hit **Next**.

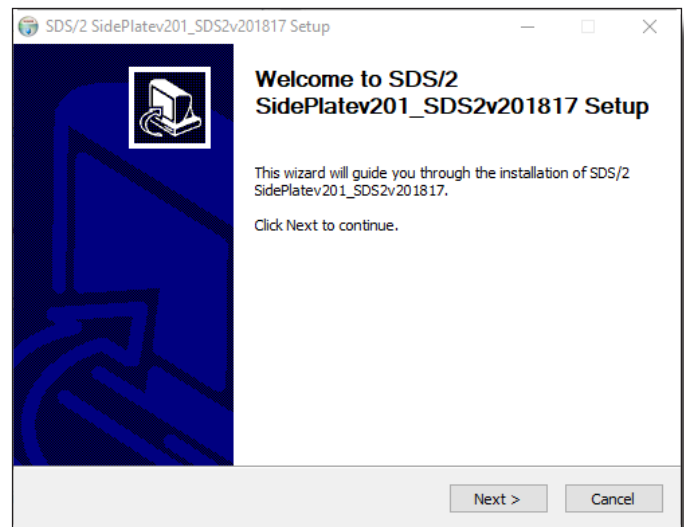


Figure 1: Welcome Screen

After selecting **Next** to the Installation Instructions, the installer should automatically find the path for your *Data files folder*, as shown in Figure 2. If the path is incorrect, select the button **...** to the right and browse to the SDS/2 v2017 or v2018 data directory. If the path is correct, hit **Next** and then **Install**. The installer will then copy the files to the appropriate location. Once the installer is finished, select **Next** and **Finish**.

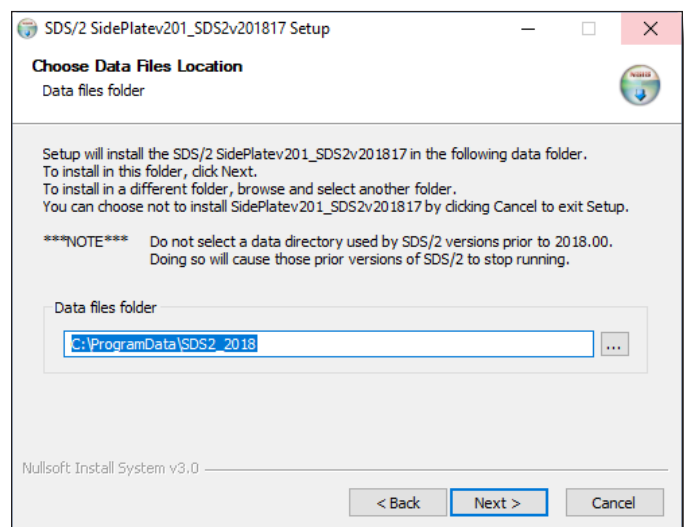


Figure 2: Choose Data Files Location

NOTE: IF YOU INSTALLED SDS/2 FOR THE FIRST TIME, PLEASE SKIP DOWN TO THE DETAILING TEMPLATES INTO SDS/2 PROJECT SECTION.

DETAILING TEMPLATES INTO DATA DIRECTORY

In the SDS/2 data directory, there is a *detailing* folder that contains a *Default* and *Detailing (v2017)* or *SDS2 (v2018)* folder. This is where the detailing templates are installed. For the first installation of SDS/2, both of these folders match. However, any installation after the first will only update the *DesignData* or *SDS2* folder. This eliminates the possibility of overwriting users template file modifications in the *Default* folder. Since the *Default* folder is used when creating any new SDS/2 projects, we need to update that so new SDS/2 projects use the updated files. Therefore, if you are not currently making manual modifications to the template files, please follow the instructions below.

NOTE: IF YOU ARE MAKING MODIFICATIONS TO THE TEMPLATE FILES, PLEASE CONTACT SDS/2 SUPPORT FOR HELP IN COPYING FILES.

Replace **VERSION** with either 2017 or 2018 in the instructions below. To copy detailing template files from the *DesignData* or *SDS2* folder:

1. Open *Windows Explorer* to that location. The default location is
C:\ProgramData\SDS2_**VERSION**\detailing\DesignData or SDS2.
2. Open the *US* folder, which is inside the *DesignData* or *SDS2* folder.
3. Select all of the files and right-click **Copy**.
4. Go to the C:\ProgramData\SDS2_**VERSION**\detailing\Default\US folder and right-click **Paste**.
5. Replace the existing files.

By following these instructions, the *Default* folder, which is used when creating a new SDS/2 project, is updated to include detailing templates for SidePlate Component.

DETAILING TEMPLATES INTO SDS/2 PROJECT

If you have an SDS/2 project that was created **prior** to running the SidePlate for SDS/2 installer, you will need to follow these steps. Otherwise, you can go ahead and create a new SDS/2 project.

To copy detailing template files into your project created **prior** to installing SidePlate for SDS/2:

1. Change into the SDS/2 project.
2. Select **Utility Functions** from the **SDS/2 Main Menu**.
3. Select **Copy Detailing Templates** in **Utility Functions**.
4. In the *Copy Templates Utility* screen, as shown in Figure 3:
 - a. Select **Template Folder**. The default path should be the correct location.
 - b. Select **Erase existing files from the destination source**.
 - c. Hit **OK**.

By following these instructions, your current job is updated with the new detailing template.

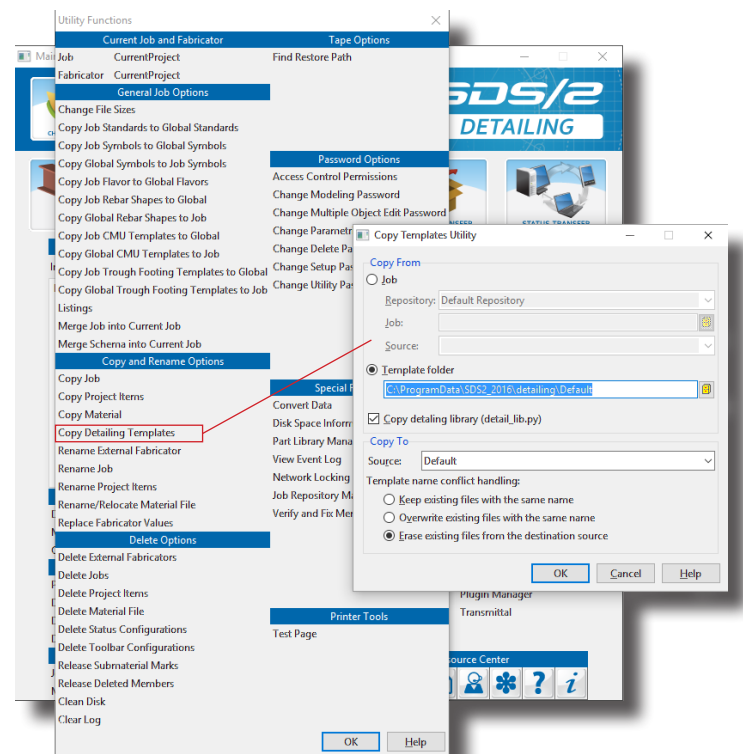


Figure 3: Copy Templates Utility Screen